

# Paldiski South Harbour



# Paldiski South Harbour

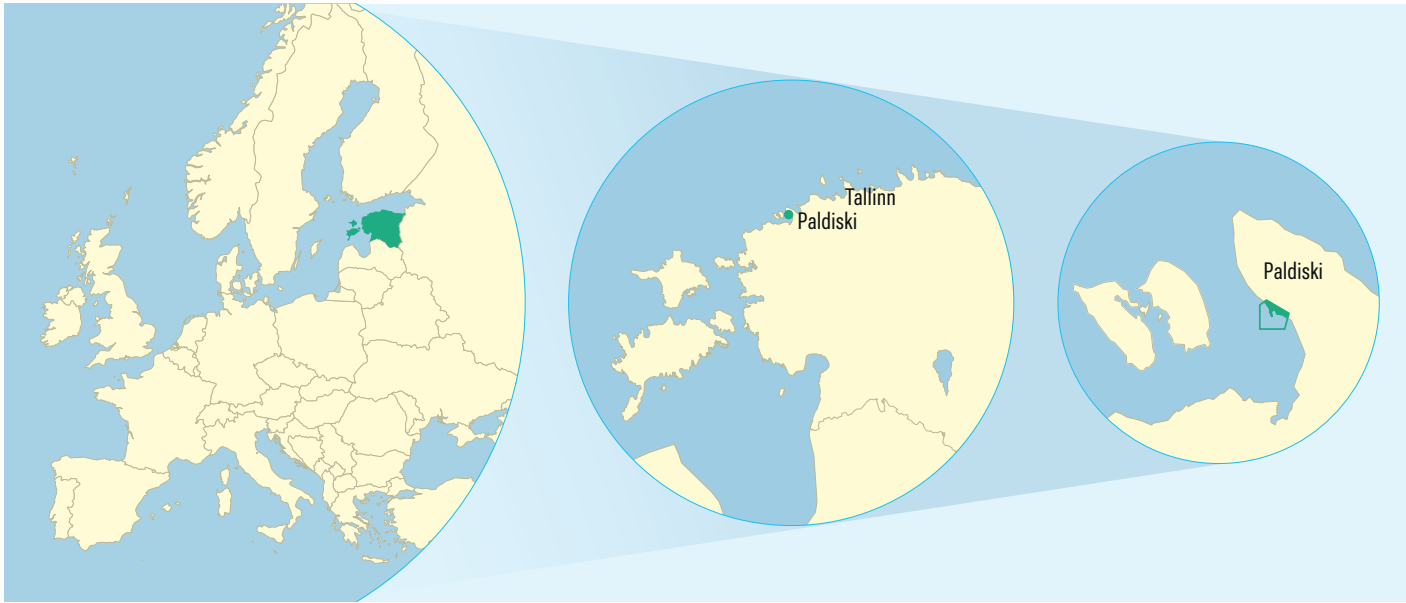
Located in North-West Estonia, 45 km west of Tallinn, Paldiski South Harbour belongs to the state-owned holding company Port of Tallinn\*.

**Paldiski South Harbour has the following advantages:**

- Location: on the main East-West cargo-route, which allows to serve import-export and transit cargoes
- Natural conditions: practically ice-free, short and deep fairway, deep-water quays
- Connections: good regular Ro-Ro connections with the main Western European ports and good railway and road connections to the vast hinterland
- Plenty of space for developments directly in the port and in surrounding industrial parks

**Port in figures**

|            |                         |                        |                       |
|------------|-------------------------|------------------------|-----------------------|
| Territory  | Aquatory                | Number of berths       | Total length of quays |
| 119 ha     | 147 ha                  | 10                     | 1850 m                |
| Max. depth | Max. length of a vessel | Max. width of a vessel |                       |
| 15.5 m     | 250 m                   | 35 m                   |                       |



\* portoftallinn.com



# General information

ESTEVE AS has provided cargo handling services at multi-purpose Paldiski South Harbour since 1997. We offer our customers 24/7 service in a cost effective and profitable manner.

|   |  |   |
|---|--|---|
| Main cargoes                                | <ul style="list-style-type: none"><li>• Ro-Ro cargoes</li><li>• Project and High &amp; Heavy cargoes</li></ul>   | <ul style="list-style-type: none"><li>• Bulk and Break-bulk cargoes</li><li>• Containers</li></ul>  |
| Support services                            | <ul style="list-style-type: none"><li>• Storage of goods: indoor and outdoor</li><li>• Services of bonded storage (warehouse) and customs terminal</li></ul>   | <ul style="list-style-type: none"><li>• Ship agency services</li><li>• Weighing of goods: trucks &amp; railway waggons</li></ul>  |
| In order to provide these services, we have | <ul style="list-style-type: none"><li>• An open storage area of 23 hectares and an indoor storage area of 20 450 m²</li><li>• Mobile cranes with a lifting capacity of up to 100 tonnes</li><li>• Portal cranes with a lifting capacity of up to 40 tonnes</li></ul> | <ul style="list-style-type: none"><li>• Forklifts with a lifting capacity of up to 25 tonnes</li><li>• Other equipment, such as reach-stackers, wheel loaders, etc.</li><li>• Skilled and experienced staff</li></ul> |



ESTEVE AS as part of Baltic Maritime Logistic Group\* comprised of 84 companies registered in more than 14 countries in Europe and Central Asia.

|   |  |   |
|---|--|---|
| BMLG companies operate in the following fields of logistics | <ul style="list-style-type: none"><li>• Freight forwarding</li><li>• Stevedoring and terminal operations</li><li>• Chartering and ship management</li><li>• Road transport</li></ul> | <ul style="list-style-type: none"><li>• Ship and liner agency</li><li>• Railway transport</li><li>• Warehousing and distribution</li><li>• Automotive logistics</li></ul> |
|---|--|---|

In cooperation with other companies of the group, we can offer complete logistics solutions.



\* BMLG.eu



# Ro-Ro

Paldiski South Harbour is the biggest Ro-Ro cargo port in Estonia. ESTEVE AS handles more than 90 000 units of Ro-Ro cargo annually, including new cars, construction and agricultural machinery, various types of transportation equipment, boats and yachts, and a large variety of cargoes on roll trailers and cassettes.

**Paldiski South Harbour is visited by several Ro-Ro lines, which ensures connection with major ports in Western and Northern Europe**



| Operator   | Ports of call   |  |
|--|---|--|
| <div><div></div><div>Mann Lines<br/>mannlines.com</div></div>      | Turku<br>Bremerhaven<br>Harwich<br>Rotterdam<br>Cuxhaven            | Finland<br>Germany<br>Great Britain<br>Netherlands<br>Germany                  |
| <div><div></div><div>KESS (K-Line)<br/>klineurope.com</div></div>  | Hanko<br>Bremerhaven<br>Emden<br>Sheerness<br>Zeebrygge<br>Malmö    | Finland<br>Germany<br>Germany<br>Great Britain<br>Belgium<br>Sweden            |
| <div><div></div><div>Tallink<br/>tallinksilja.com</div></div>      | Kapellskär  | Sweden   |
| <div><div></div><div>Transfennica<br/>transfennica.com</div></div> | Antwerpen<br>Hanko<br>Kotka<br>Rauma<br>Lübeck<br>Gdynia<br>Tilbury | Belgium<br>Finland<br>Finland<br>Finland<br>Germany<br>Poland<br>Great Britain |



# High & Heavy

One of ESTEVE AS's specialities is the handling of High & Heavy cargoes. In addition to the ability to lift cargoes weighing up to 100 tonnes, we also specialize in the loading and securing of cargo onto rail transport.

- Main cargoes
- Agricultural machinery, such as tractors, combine harvesters, seeders, etc.
  - Construction and mining machinery, such as bulldozers, graders, cranes, crushers, etc.

- Other project cargoes: different equipment for the food and beverage, forest and paper and printing industries, wind turbines, etc.





# Bulk cargoes

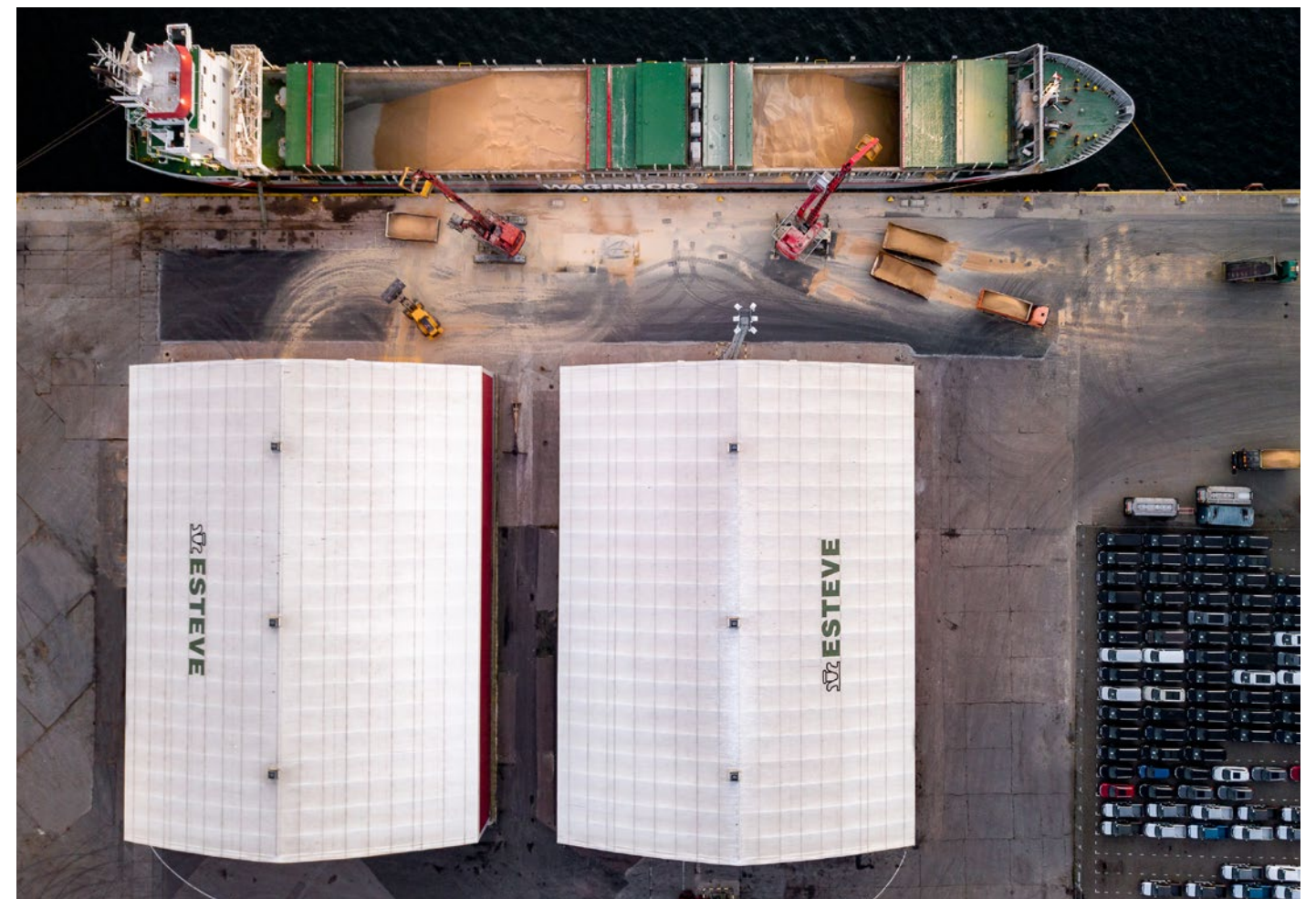
Over the years, ESTEVE AS has successfully handled millions of tonnes of bulk cargoes, ranging from metal scrap, round timber, wood pellets, grain, peat, crushed rock & limestone.



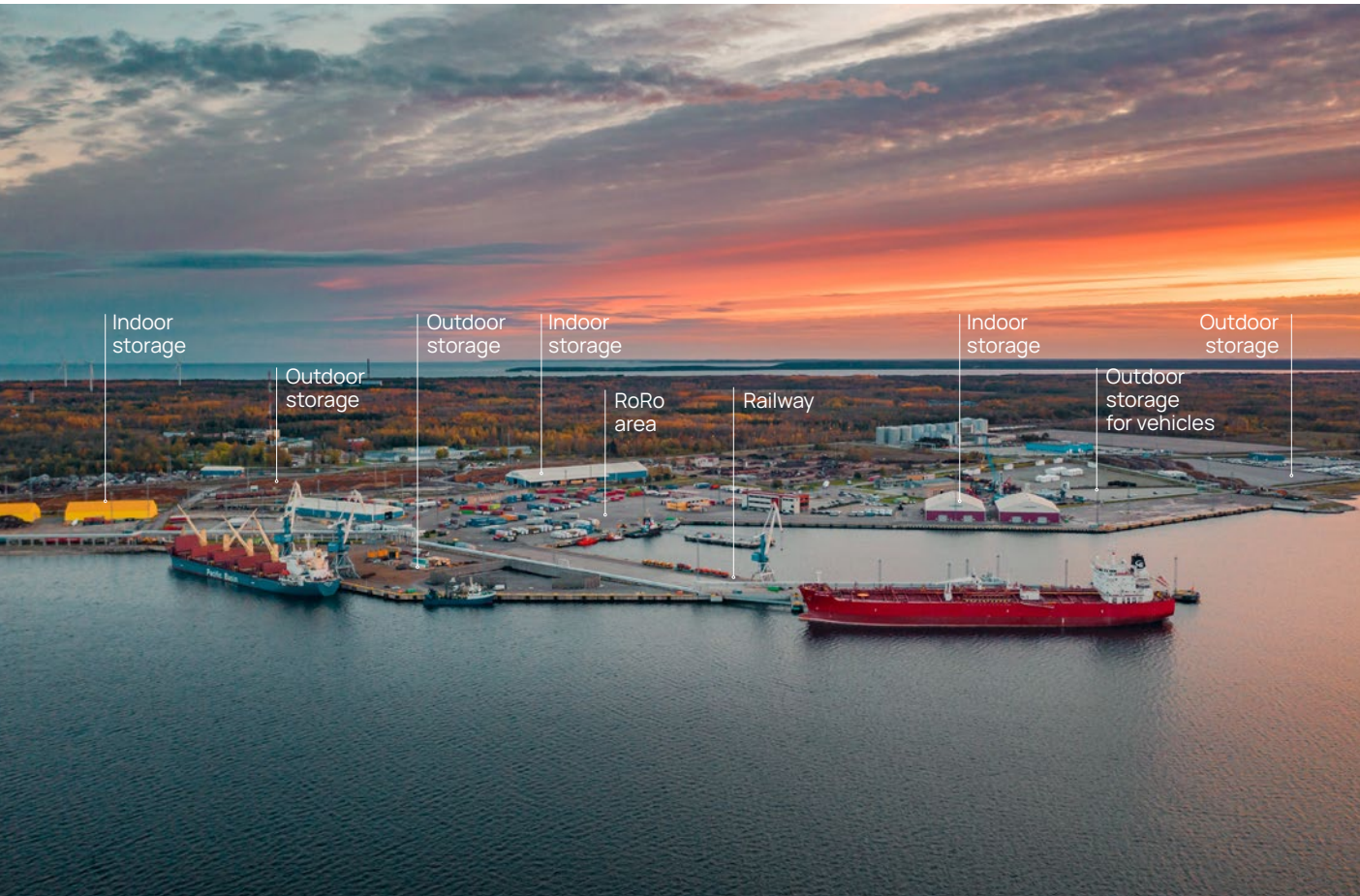
# Support services

## Support services offered by ESTEVE AS

- Storage of goods: indoor and outdoor
- Services of bonded storage (warehouse) and customs terminal
- Ship agency services
- Weighing of goods: trucks & railway waggons
- Radiation inspection of goods









**ESTEVE AS**

Lõunasadama tee 11  
76806 Paldiski  
Estonia

Phone: +372 654 1500

Fax: +372 654 1502

[esteve@esteve.ee](mailto:esteve@esteve.ee)

[esteve.ee](http://esteve.ee)

ISO 9001  
ISO 14001  
ISO 45001

BUREAU VERITAS  
Certification

